

CORFLEX



SÉRIE G601

Cloisons mobiles en verre sans cadre
Panneaux individuels

CARACTÉRISTIQUES

- Sabots en aluminium anodisé
- Système supporté par le haut
- Aucun rail au plancher
- Aucune moulure verticale
- Goupilles au sol sur tous les panneaux
- Choix de 2 profilés
- Barre panique en option (avec porte pivot)
- Ferme-porte automatique en option (avec porte pivot)
- Recouvrement en acier inoxydable en option

PROPRIÉTÉS

HAUTEUR MAXIMALE PAR PANNEAU
3658mm (12') sans porte intermédiaire
3048mm (10') avec porte intermédiaire

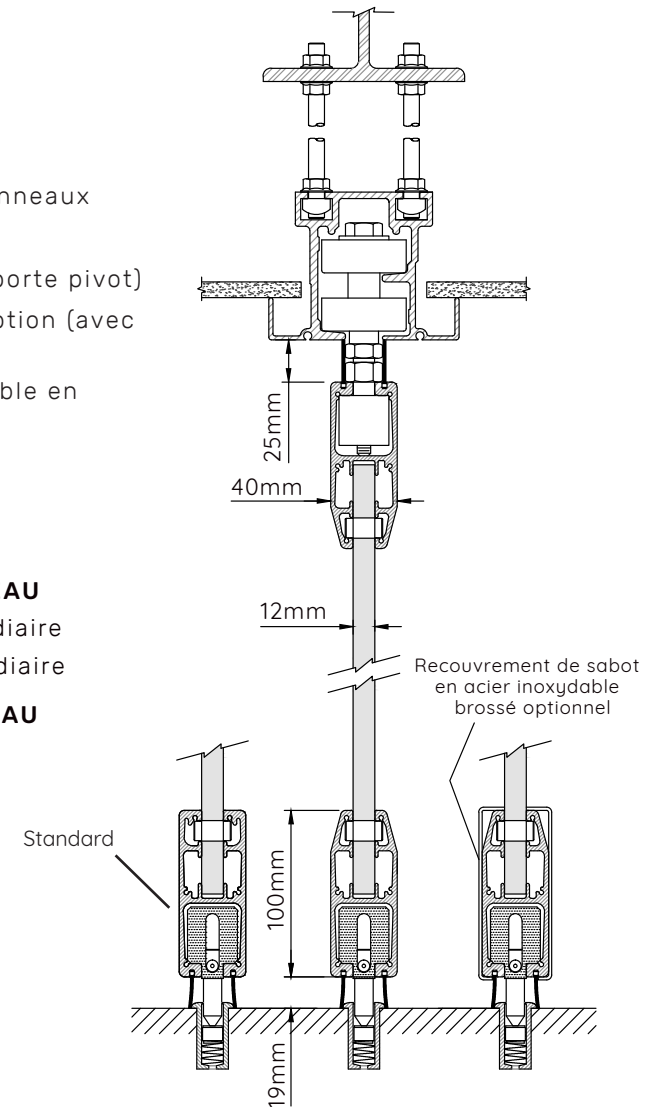
LARGEUR MAXIMALE PAR PANNEAU
1219mm (4')

POIDS DE LA CLOISON
31,7 kg/m² (6,5 lbs/pi²)

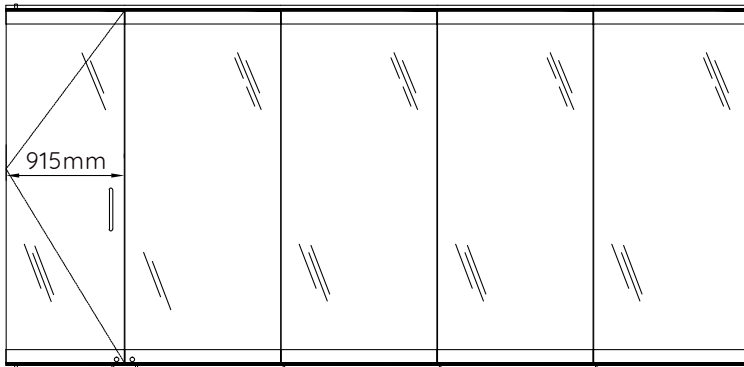
TYPE DE VERRE
Verre trempé 12mm

SEUILS HAUTS ET BAS
Brosses

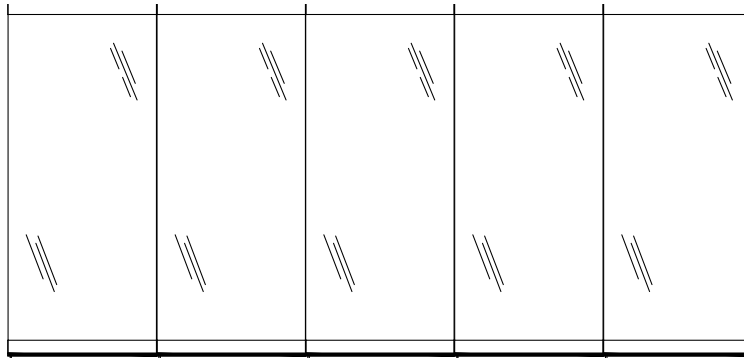
COUPE VERTICALE



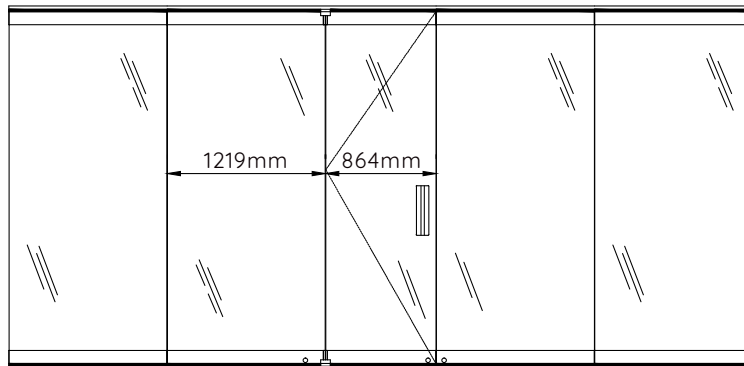
ÉLÉVATIONS



PORTE PIVOT

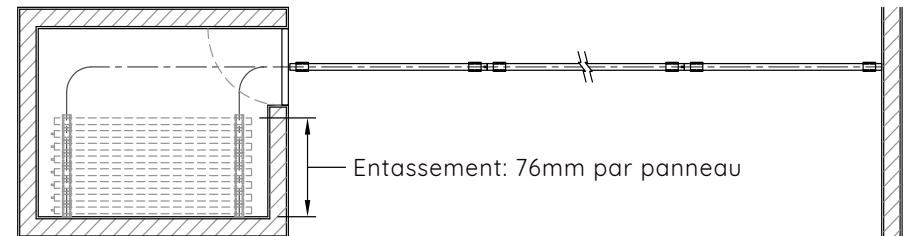
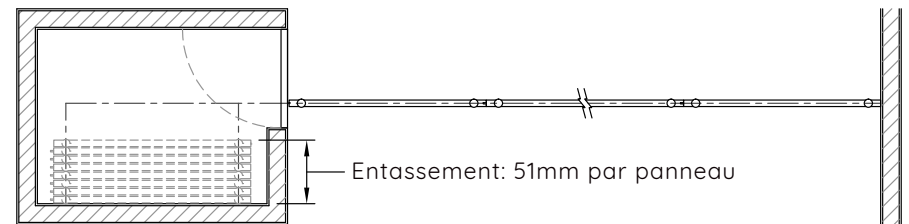
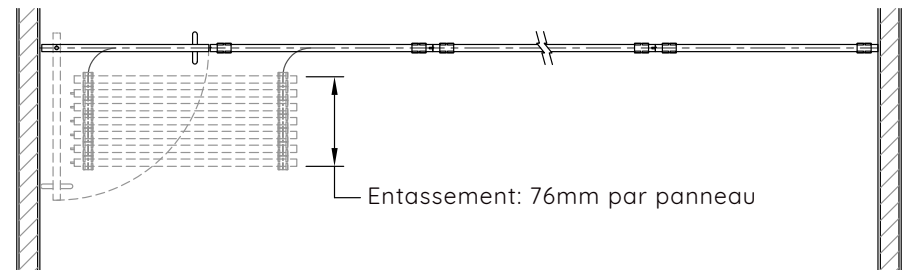
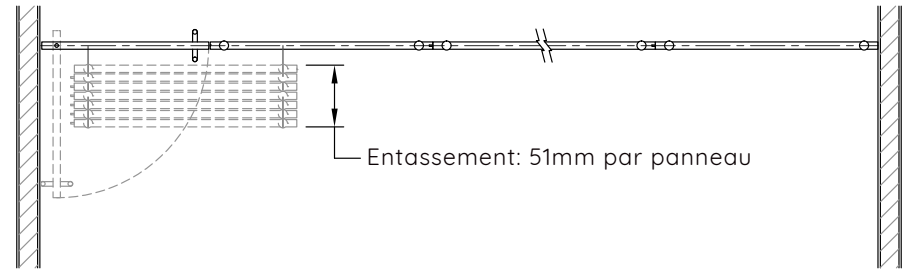


SANS PORTE

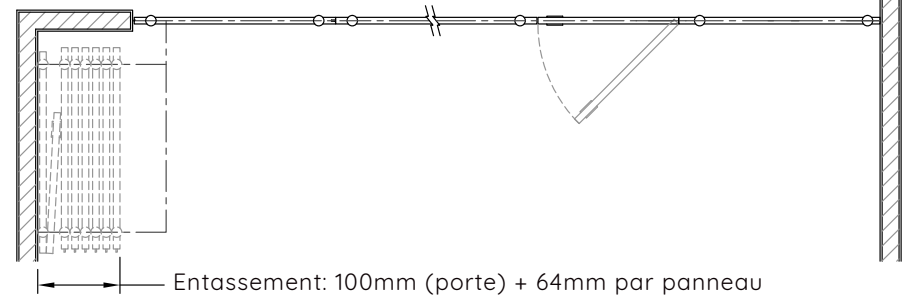
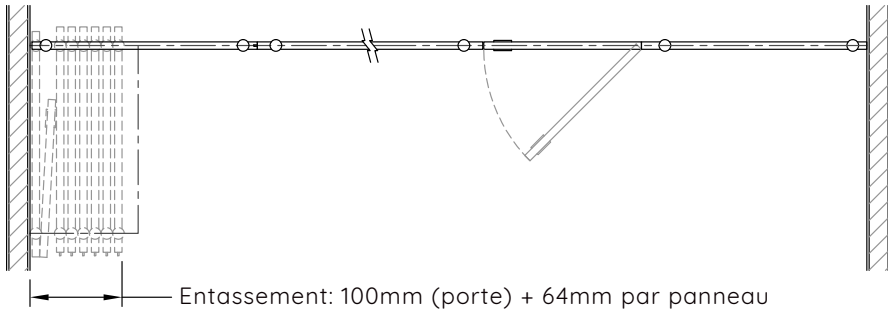
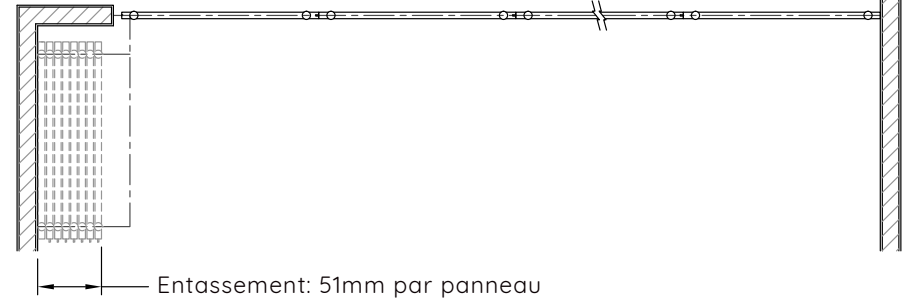
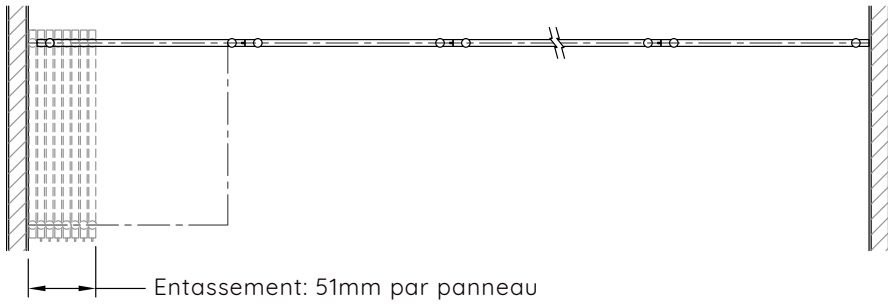
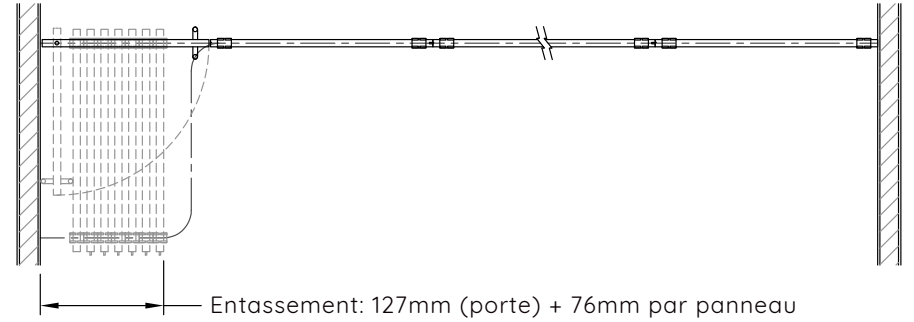
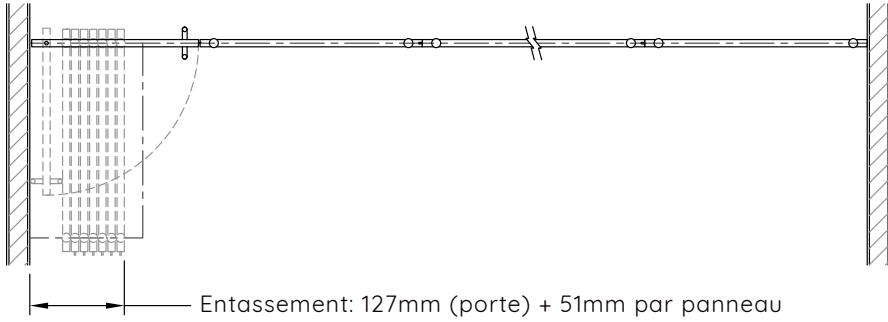


PORTE INTERMÉDIAIRE

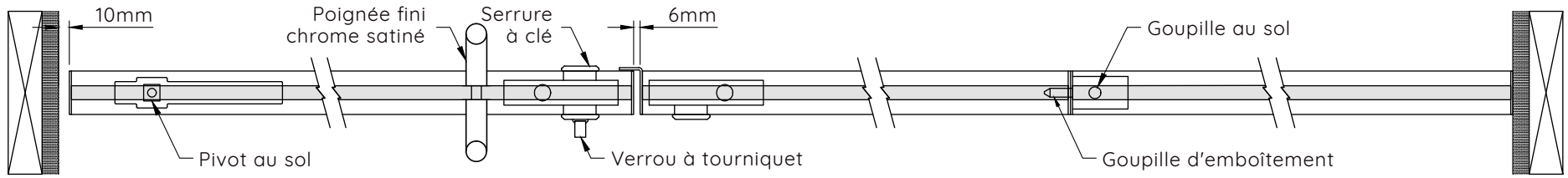
CONFIGURATIONS STANDARDS



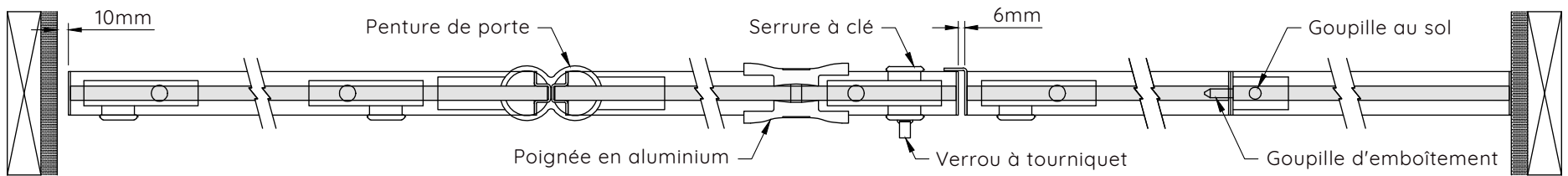
CONFIGURATIONS STANDARDS (SUITE)



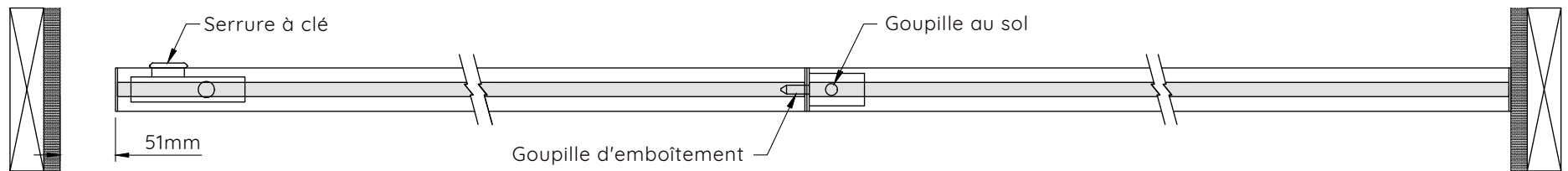
COUPES HORIZONTALES



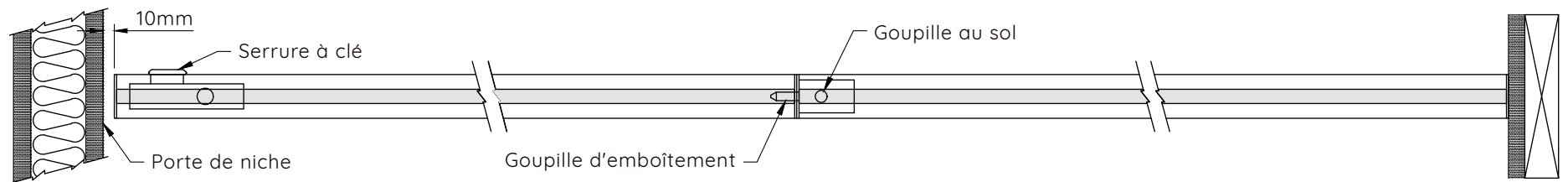
PORTE PIVOT



PORTE INTERMÉDIAIRE



SANS PORTE



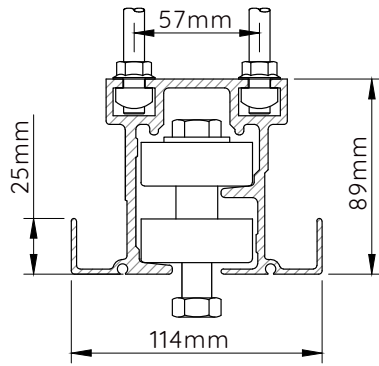
ARRÊT SUR PORTE NICHE

RAILS ET CHARIOTS

POIDS MAX. PAR PANNEAU

225 kg (500 lbs)

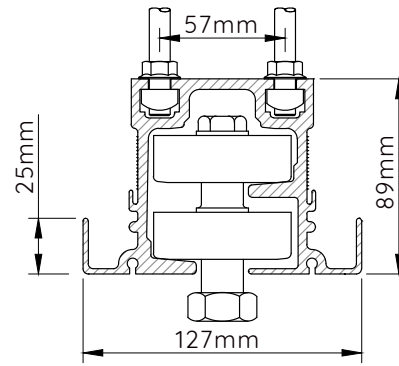
* Ne peut pas être utilisé avec une porte intermédiaire



RAIL #26

POIDS MAX. PAR PANNEAU

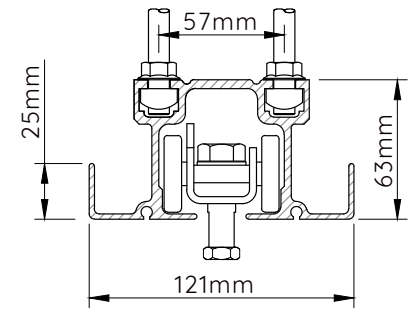
450 kg (1000 lbs)



RAIL #36

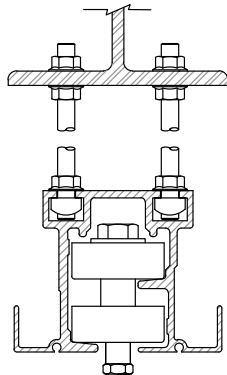
POIDS MAX. PAR PANNEAU

270 kg (600 lbs)

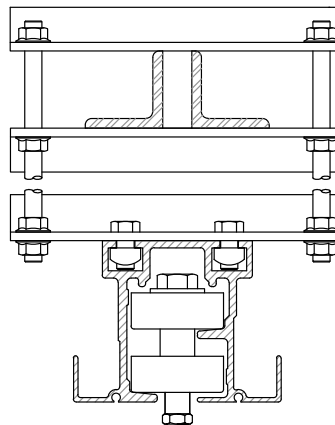


RAIL #38 (COURBE)

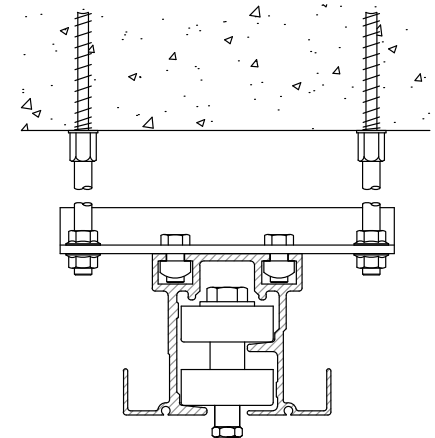
SUSPENSIONS DU RAIL



POUTRE D'ACIER



POUTRELLE



ANCRAGE AU BÉTON